

Absolute Manage – SCCM Integration

INTELLIGENT. AUTOMATED. CROSS PLATFORM.



Application Management



Security, Change & Configuration



Automated Patch



Computer Imaging



Asset Inventory



Power Management



Absolute® Manage is the world's only persistent computer lifecycle management solution that allows you to manage the PC and Mac devices in your deployment from a single interface. Using our patented Computrace® persistence technology, Absolute Manage is able to self-heal if the application agent is removed from a computer, providing you with a constant connection to each device in your deployment.

System Center Configuration Manager

While we firmly believe that a single cross-platform client management system is the most cost-effective means to manage multi-platform environments, each computing environment is unique.

Some organizations already have a Windows client management solution in place, such as System Center Configuration Manager (SCCM). In many instances the SCCM client licenses were bundled with Windows at the time the systems were purchased providing this Windows optimized technology at minimal cost.

Intelligent

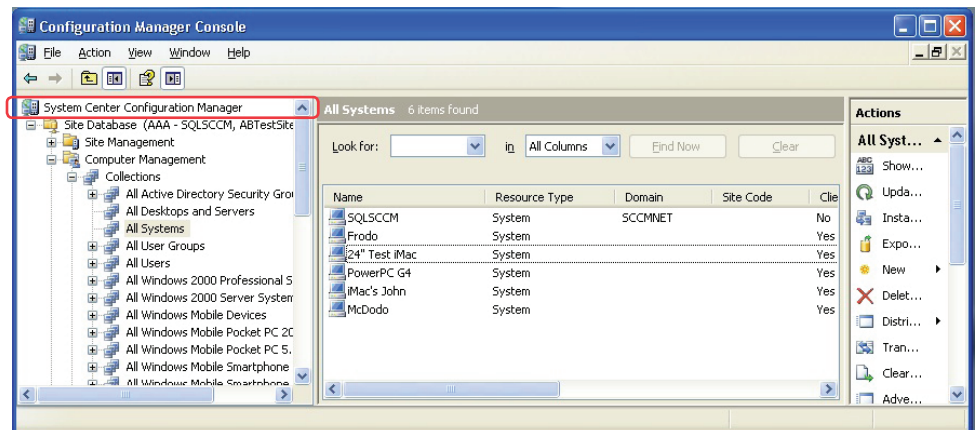
Track installed applications and licenses, and redeploy underused licenses to maximize your inventory and avoid non-compliance fines. Find, terminate, and remove unlicensed and unauthorized software.

Automated

Efficiently manage all of your assets by automating time-consuming IT processes such as software distribution, patch management, asset inventory and imaging.

Cross-Platform

Enjoy ease of use and cross-platform capabilities using a single console to manage all PC and Mac devices in your deployment.



Absolute Manage – Integration with SCCM

If this is your reality then it's likely you have already invested time and resources in SCCM as the standard for configuring and updating Windows servers, clients, and devices within your organization. But what about the Mac devices in your deployment? In order to manage these clients to a similar standard, you must invest in a supplementary solution. Ideally one that is integrated with SCCM for consolidated data collection and reporting.

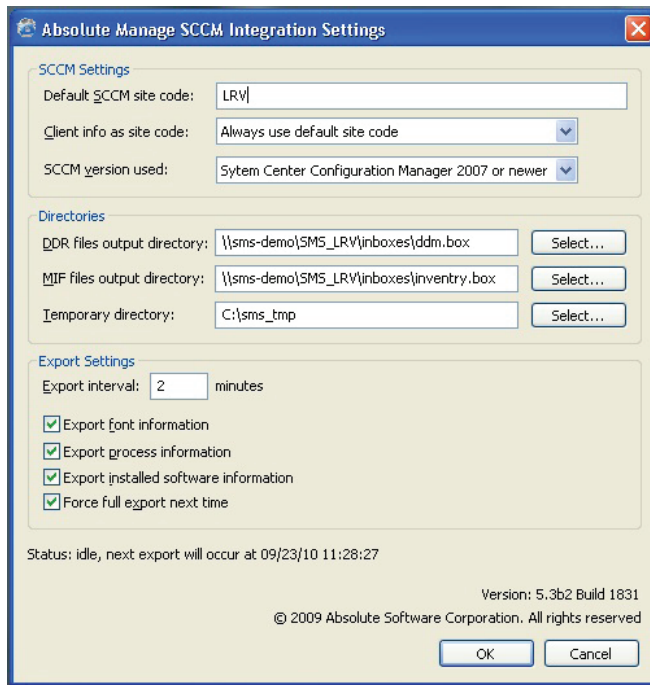
Absolute Manage is fully integrated with SCCM, providing an export module to send Mac inventory data directly to SCCM in the same native format and mechanism as a standard Windows PC. This means you can automatically integrate Mac and Windows PC data into a single set of SCCM reports for an overview of your entire deployment.

Absolute Manage integration with SCCM allows you to export Mac inventory information to SMS 2.0/2003 or SCCM 2007 on a recurring basis at definable intervals. Virtually all Mac inventory data will be exported in native DDR and MIF files to the specified network shares on the SCCM server where it normally expects these files to be uploaded from Windows clients.

Absolute[®]
MANAGE

Absolute Manage – SCCM Integration

INTELLIGENT. AUTOMATED. CROSS PLATFORM.



Inventory information that can be exported includes:

- Hardware
- Operating system
- Font
- Process
- Installed software

Once the SCCM server processes these files, computer entries will appear for your Mac devices in the SCCM console.

Best of all, no additional hardware purchases are required since the Absolute Manage server can be installed on an existing PC.

Additional Functionality

Absolute Manage provides full service computer lifecycle management for Macs and PCs, including power management and power usage reports for all the computers in your deployment. With Absolute Manage you can save significant resources by creating and implementing energy savings policies across your organization.

More than just asset inventory for Macs, Absolute Manage provides a complete remote Mac management solution. Deploy Mac software, OS patches, and OS images. Run scripts, Time Machine backups, view system logs, and push out or delete files remotely.

Absolute Manage offers the flexibility of domain independence so you can manage the Macs and PCs that are outside your Active Directory domain, for example workgroups, VLANs, unbound field computers or computers in another domain.

Learn more about Absolute Manage, view a recorded product demonstration, or download a free evaluation at www.absolute.com

Absolute[®]

MANAGE

"I'm just happy and excited I finally found some management software that works the way I was looking for. It feels like it was made by somebody in my shoes."

Jonathan Sherman
Network Manager
Hudsonville Public Schools

www.absolute.com

System Requirements

Server

- Windows[®] 2000 SP4 or up[†]
- Mac[®] OS X 10.4 or up[‡]

Admin

- Windows[®] 2000 SP4 or up[†]
- Mac OS[®] X 10.4 or up[‡]

Client

- Windows[®] 2000 SP4 or up[†]
- Mac[®] OS X 10.3.9 or up[‡]
- Mac[®] OS X 10.2
(support is available via Agent version 4.0.4)
- Mac[®] OS X 10.3-10.3.8
(support is available via Agent version 4.5.x)

InstallEase for Mac

- Mac[®] OS X 10.4 or up[‡]
- Xcode[®] 2.4 or newer
(only for creating PKG installers and uninstallers)
- Iceberg[®] 1.2.2 or newer
(only for creating Iceberg projects)

[†] including Windows[®] 2008 Server & Windows 7[®]

[‡] including Mac[®] OS X 10.6 Snow Leopard[™]